

**AVANTI**

---

**NUANCIER  
COLOUR GUIDE**

---

**EGGER**



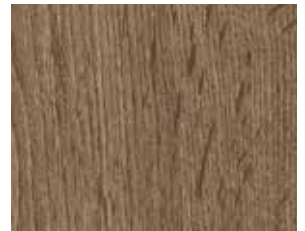
H1151-ST10



H1176-ST37



H1180-ST37



H1181-ST37



H1210-ST33



H1377-ST36



H1379-ST36



H1399-ST10



H1400-ST36



H1486-ST36



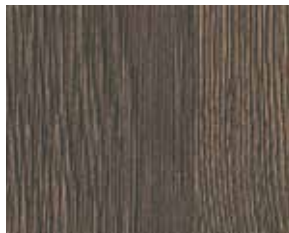
H3012-ST22



H3081-ST22



H3090-ST22



H3325-ST28



H3326-ST28



H3331-ST10



H3332-ST10



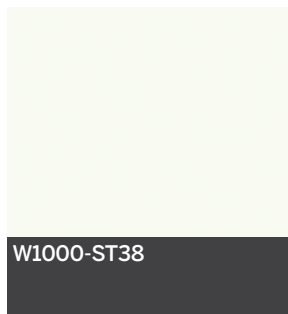
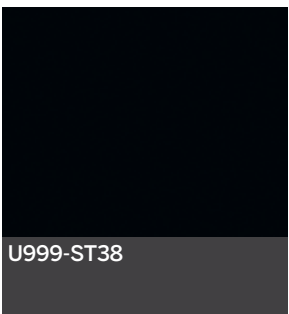
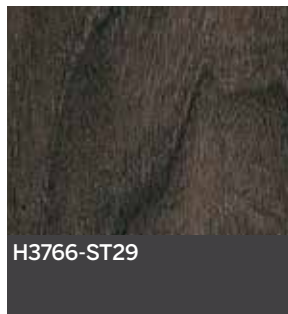
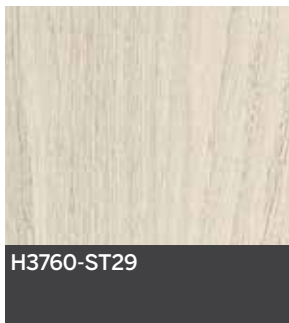
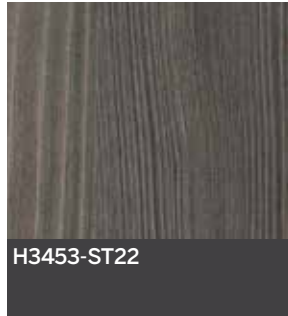
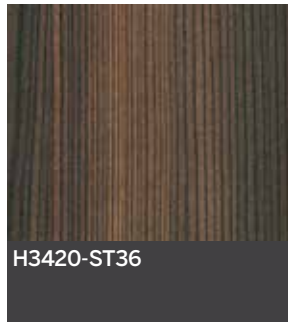
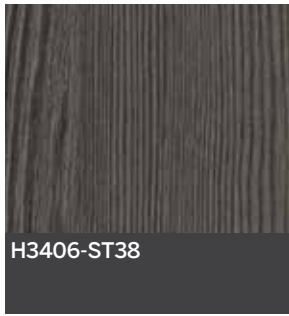
H3335-ST28



H3403-ST38



H3404-ST38



Informez-vous auprès du service à la clientèle pour connaître le distributeur autorisé de votre région.  
Contact customer service for information on your local authorized distributor.

2375, avenue Dalton, bureau 200  
Québec (Québec) Canada G1P 3S3

**T** 418 652-7777 | 1 866 652-7777

**F** 418 878-5591 | 1 866 878-5591

**info@premoule.com**

**premoule.com**

En raison du procédé d'impression, les photographies dans ce dépliant peuvent comporter des variations de couleur par rapport à nos couleurs réelles. Nous vous recommandons de vous procurer un échantillon pour plus d'exactitude.

Photography in this leaflet is for illustration purposes only. Actual color may vary slightly due to the printing process. For accurate color selection we recommend that you obtain a product sample.

Prémoulé appuie / Prémoulé supports

